

# MONTHLY MEMBERSHIP PROGRESS REPORT

District 2 A2

Results as of: 4/30/2026

GMT:

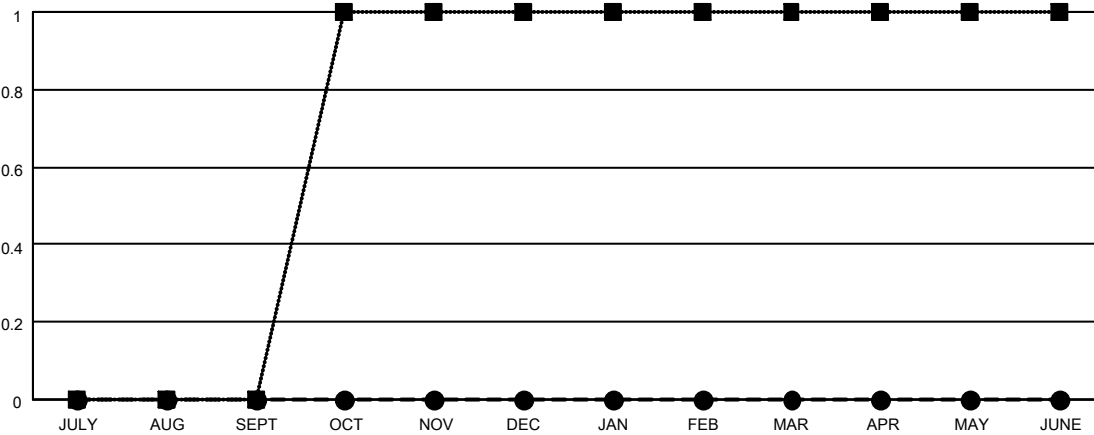
LOCATION TEXAS

GMT CA

Clubs			
RESULTS FOR 2025-2026			
QUARTER	NEW CLUB GOAL	NEW CLUBS	DROPPED CLUBS
JULY/AUG/SEPT	0	0	0
OCT/NOV/DEC	1	0	3
JAN/FEB/MAR	0	0	0
APR/MAY/JUNE	0	0	0

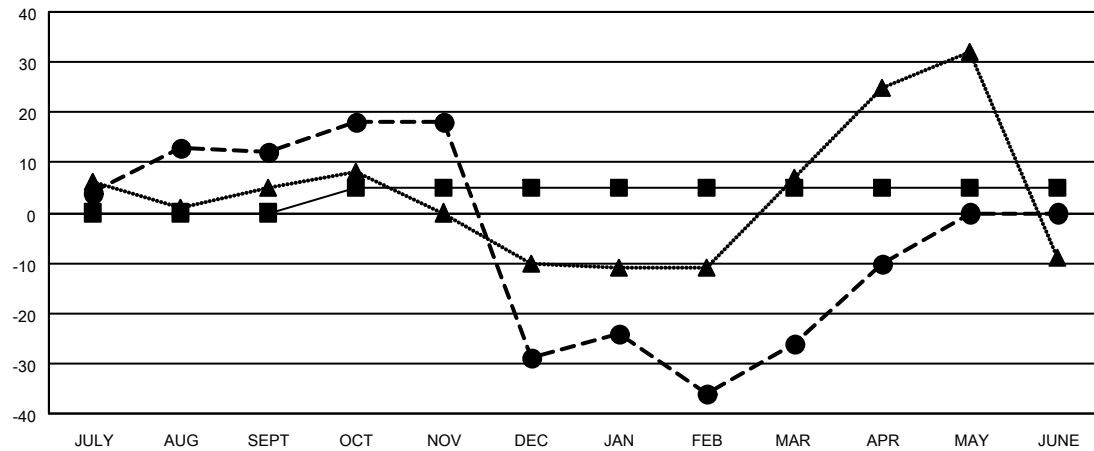
Members			
RESULTS FOR 2025-2026			
QUARTER	MEMBER GROWTH NET GOAL	MEMBER GROWTH ACTUAL	DROPPED MEMBERS ACTUAL (including transfers)
JULY/AUG/SEPT	0	36	23
OCT/NOV/DEC	5	35	73
JAN/FEB/MAR	0	39	31
APR/MAY/JUNE	0	25	9

GOALS AND ACTUAL NEW CLUBS CUMULATIVE



- - CURRENT YEAR GOALS FOR NEW CLUBS
- - CURRENT YEAR ACTUAL NEW CLUBS
- ▲ - LAST YEAR ACTUAL NEW CLUBS

GOALS AND ACTUAL MEMBERS CUMULATIVE



- - MEMBER GROWTH NET GOAL
- - MEMBER GROWTH ACTUAL
- ▲ - LAST YEAR MEMBERSHIP ACTUAL

<b>DROPPED CLUBS: 3</b>	28 CLUBS OF 60 ADDED 1 OR MORE NEW MEMBERS	<b>GENDER DISTRIBUTION</b>	
		MALE 803 (56.00%)	FEMALE 629 (43.86%)
<b>DROPPED MEMBERS</b>		<b>TOTAL FAMILY UNIT MEMBERS</b> 260	
DECEASED 15	<a href="#">CLICK HERE FOR CUMULATIVE MEMBERSHIP DATA</a>	FAMILY MEMBERS PAYING HALF DUES 136	
CLUB CANCELLED 32			
OTHER 89			
<b>TOTAL 136</b>			